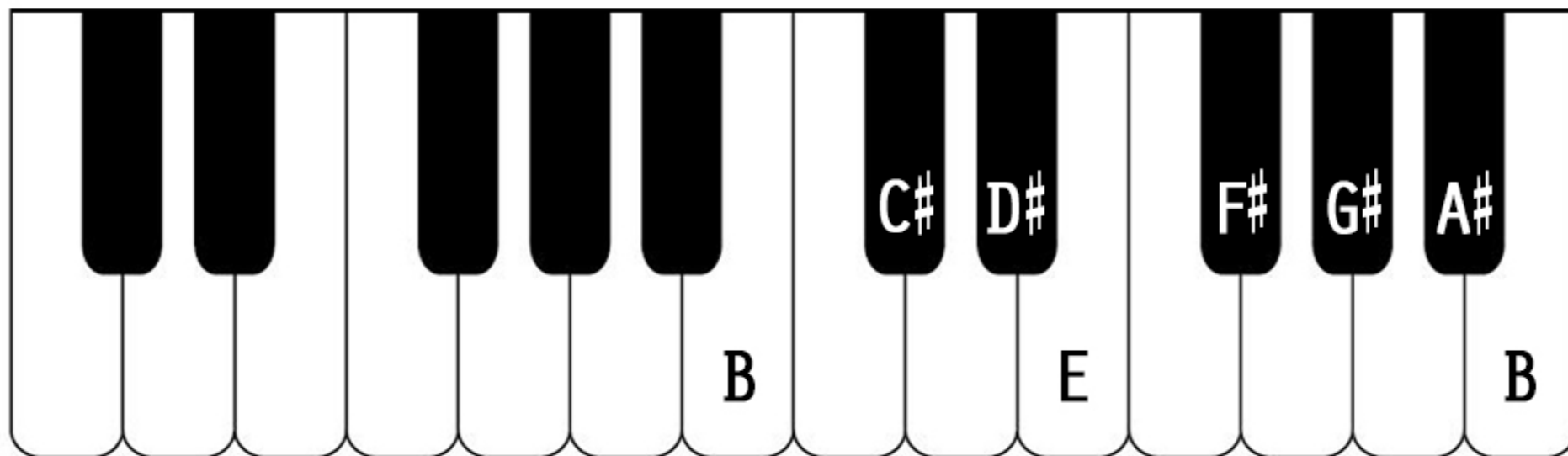


B MAJOR SCALE



Musical notation for the B major scale, showing the treble and bass staves. The treble staff starts on B4 and the bass staff starts on B2. The scale is written in B major (three sharps: F#, C#, G#). Fingerings are indicated by numbers 1-5 above or below the notes.

Treble Staff (Ascending): B4 (1), C#4 (2), D#4 (3), E4 (1), F#4 (2), G#4 (3), A#4 (4), B4 (5), A#4 (4), G#4 (3), F#4 (2), E4 (1), D#4 (3), C#4 (2), B4 (1).

Bass Staff (Descending): B2 (4), A#2 (3), G#2 (2), F#2 (1), E2 (4), D#2 (3), C#2 (2), B2 (1), A#2 (2), G#2 (3), F#2 (4), E2 (1), D#2 (2), C#2 (3), B2 (4).

WHITE KEY MAJOR SCALES

2 OCTAVES - KEY SIGNATURE NOTES HIGHLIGHTED



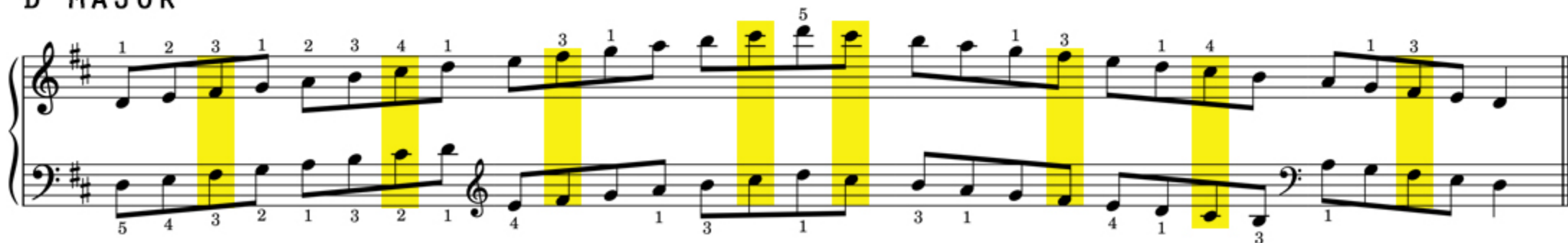
C MAJOR



G MAJOR



D MAJOR





WHITE KEY MAJOR SCALES

2 OCTAVES



C MAJOR



G MAJOR



D MAJOR



A MAJOR

1 2 3 1 2 3 4 1 3 1 5 1 3 1 4 1 3

5 4 3 2 1 3 2 1 4 1 3 1 3 1 4 1 3 1

E MAJOR

1 2 3 1 2 3 4 1 3 1 5 1 3 1 4 1 3

5 4 3 2 1 3 2 1 4 1 3 1 3 1 4 1 3 1

B MAJOR

1 2 3 1 2 3 4 1 3 1 5 1 3 1 4 1 3

4 3 2 1 4 3 2 1 3 1 4 1 4 1 3 1 4 1

F MAJOR

1 2 3 4 1 2 3 1 4 1 4 1 4 1 3 1 4

5 4 3 2 1 3 2 1 4 1 3 1 3 1 4 1 3 1