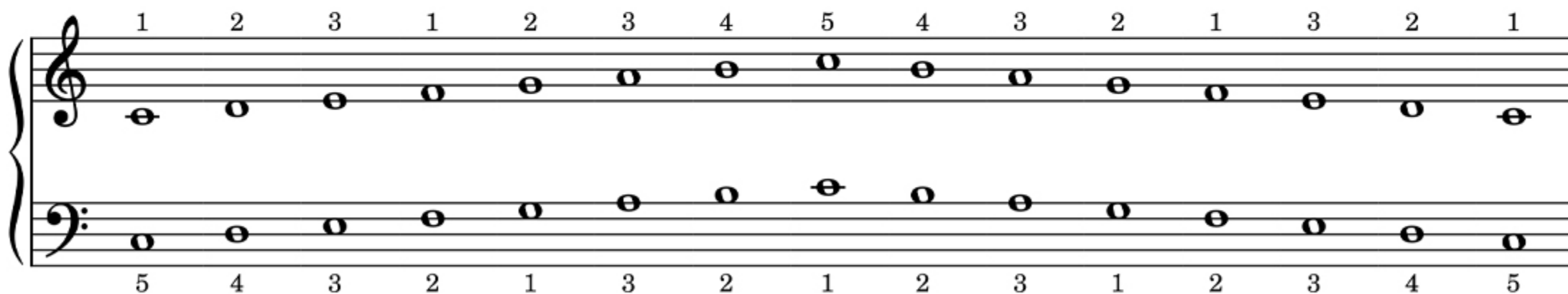
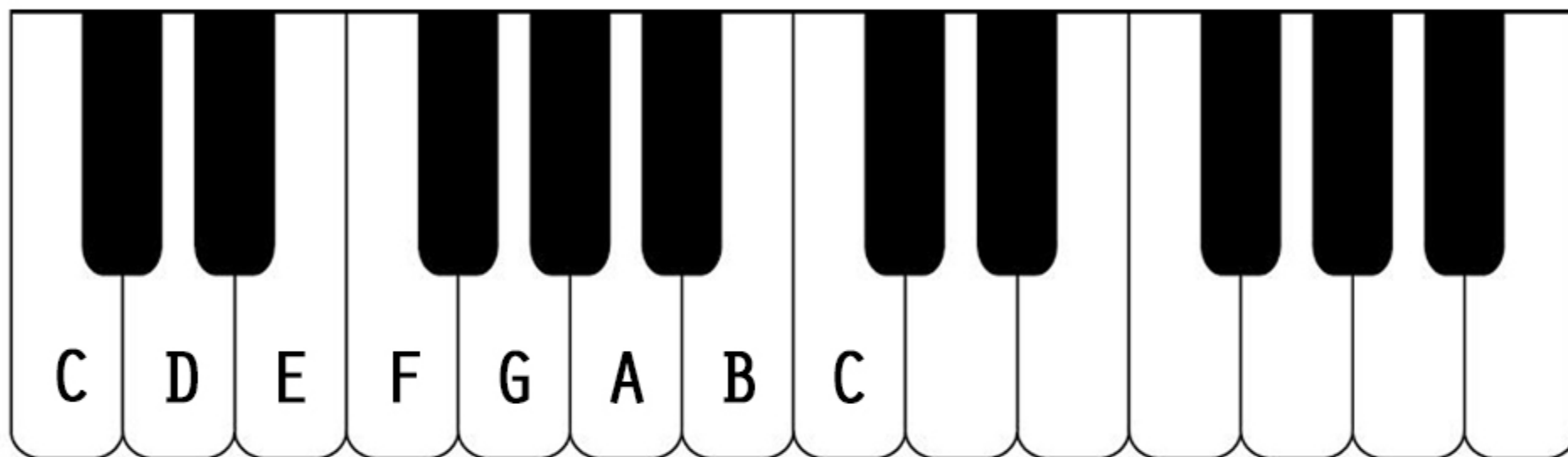


C MAJOR SCALE



WHITE KEY MAJOR SCALES

2 OCTAVES - KEY SIGNATURE NOTES HIGHLIGHTED



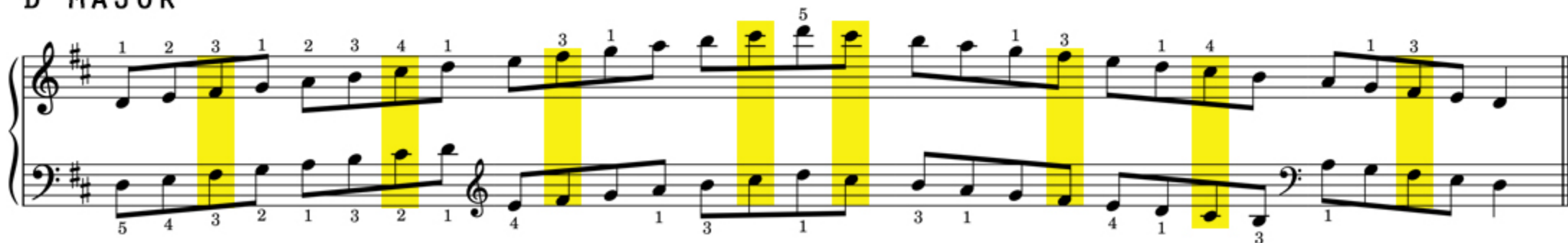
C MAJOR



G MAJOR



D MAJOR





WHITE KEY MAJOR SCALES

2 OCTAVES



C MAJOR



G MAJOR



D MAJOR



A MAJOR

Handwritten musical notation for the A Major scale (2 octaves) in treble and bass clef. The key signature has two sharps (F# and C#). The notation includes fingerings (1-5) and slurs for both hands. The treble clef starts on A4 and ends on A6. The bass clef starts on A2 and ends on A4.

E MAJOR

Handwritten musical notation for the E Major scale (2 octaves) in treble and bass clef. The key signature has three sharps (F#, C#, and G#). The notation includes fingerings (1-5) and slurs for both hands. The treble clef starts on E4 and ends on E6. The bass clef starts on E2 and ends on E4.

B MAJOR

Handwritten musical notation for the B Major scale (2 octaves) in treble and bass clef. The key signature has four sharps (F#, C#, G#, and D#). The notation includes fingerings (1-5) and slurs for both hands. The treble clef starts on B4 and ends on B6. The bass clef starts on B2 and ends on B4.

F MAJOR

Handwritten musical notation for the F Major scale (2 octaves) in treble and bass clef. The key signature has one flat (Bb). The notation includes fingerings (1-5) and slurs for both hands. The treble clef starts on F4 and ends on F6. The bass clef starts on F2 and ends on F4.