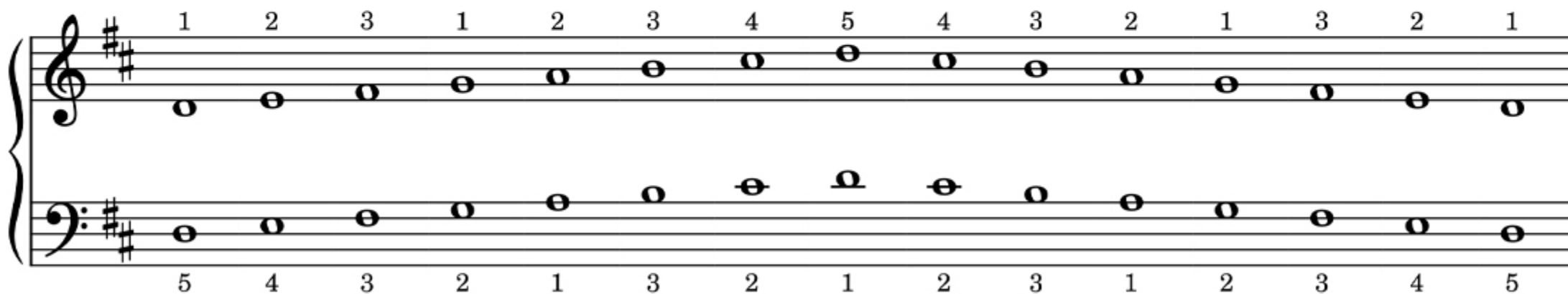
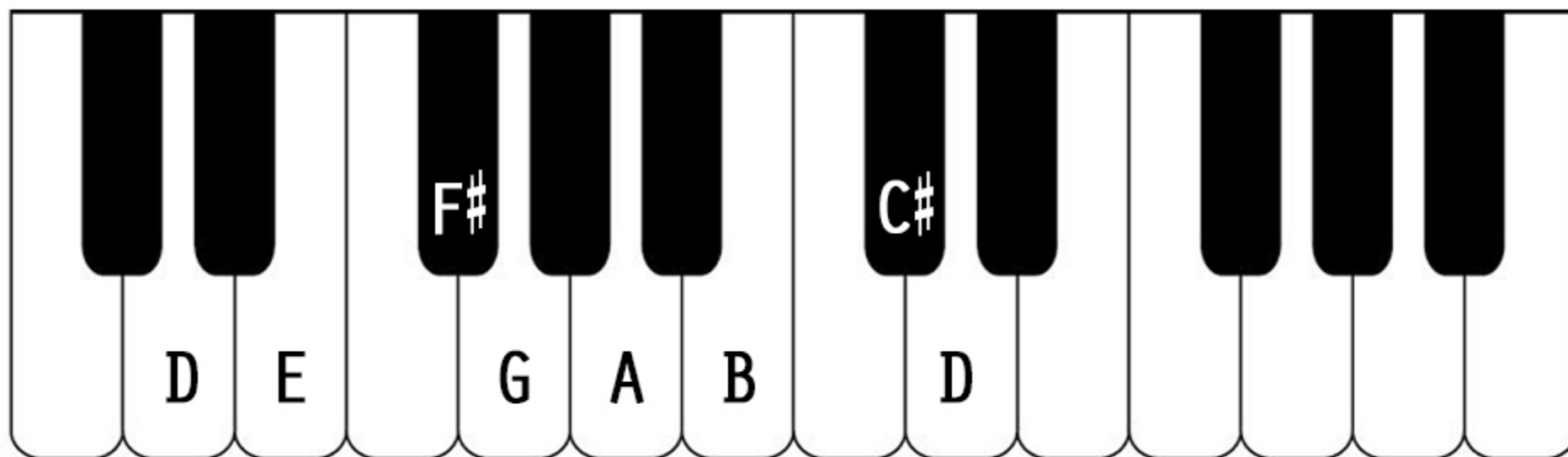


# D MAJOR SCALE



# WHITE KEY MAJOR SCALES

2 OCTAVES - KEY SIGNATURE NOTES HIGHLIGHTED



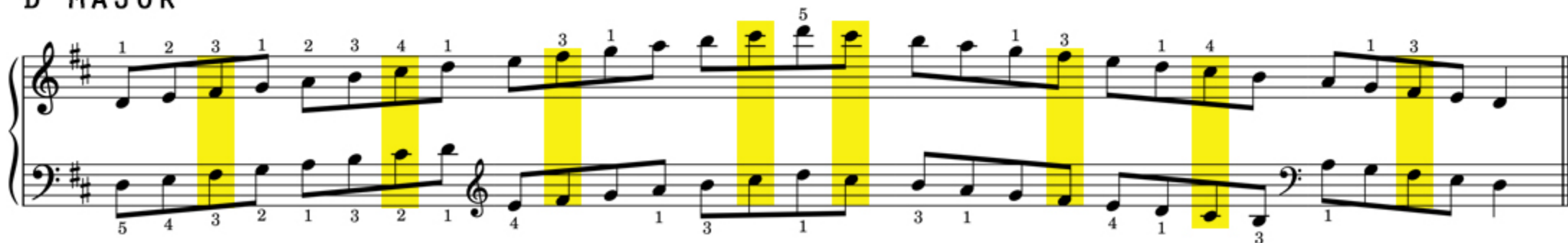
## C MAJOR



## G MAJOR



## D MAJOR





# WHITE KEY MAJOR SCALES

## 2 OCTAVES



### C MAJOR



### G MAJOR



### D MAJOR



## A MAJOR

Handwritten musical notation for the A Major scale (2 octaves) in treble and bass clef. The key signature has two sharps (F# and C#). The notation includes fingerings (1-5) and slurs for both hands. The treble clef starts on A4 and goes up to A6. The bass clef starts on A2 and goes up to A4.

## E MAJOR

Handwritten musical notation for the E Major scale (2 octaves) in treble and bass clef. The key signature has four sharps (F#, C#, G#, and D#). The notation includes fingerings (1-5) and slurs for both hands. The treble clef starts on E4 and goes up to E6. The bass clef starts on E2 and goes up to E4.

## B MAJOR

Handwritten musical notation for the B Major scale (2 octaves) in treble and bass clef. The key signature has five sharps (F#, C#, G#, D#, and A#). The notation includes fingerings (1-5) and slurs for both hands. The treble clef starts on B4 and goes up to B6. The bass clef starts on B2 and goes up to B4.

## F MAJOR

Handwritten musical notation for the F Major scale (2 octaves) in treble and bass clef. The key signature has one flat (Bb). The notation includes fingerings (1-5) and slurs for both hands. The treble clef starts on F4 and goes up to F6. The bass clef starts on F2 and goes up to F4.