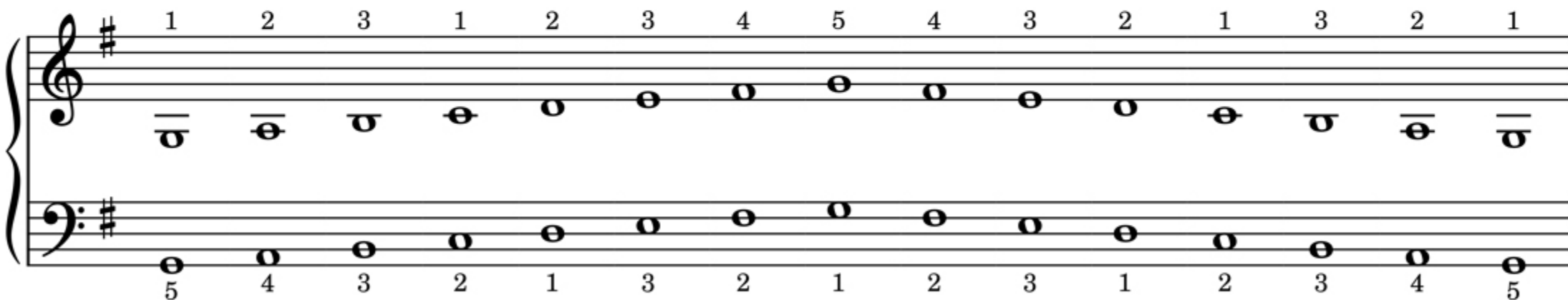
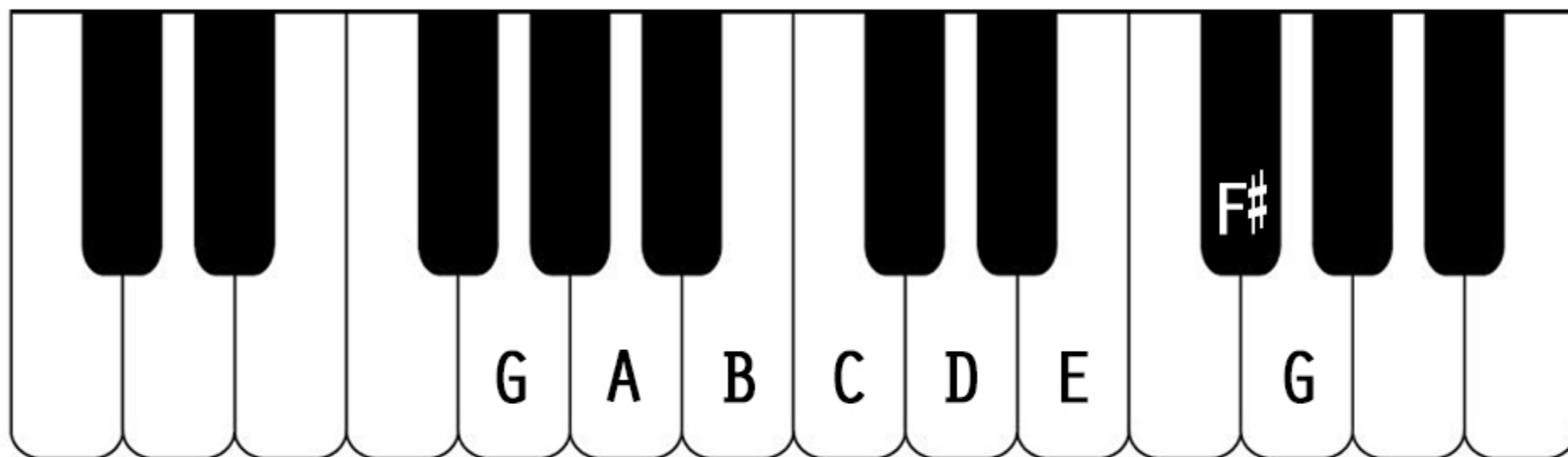


G MAJOR SCALE



WHITE KEY MAJOR SCALES

2 OCTAVES - KEY SIGNATURE NOTES HIGHLIGHTED



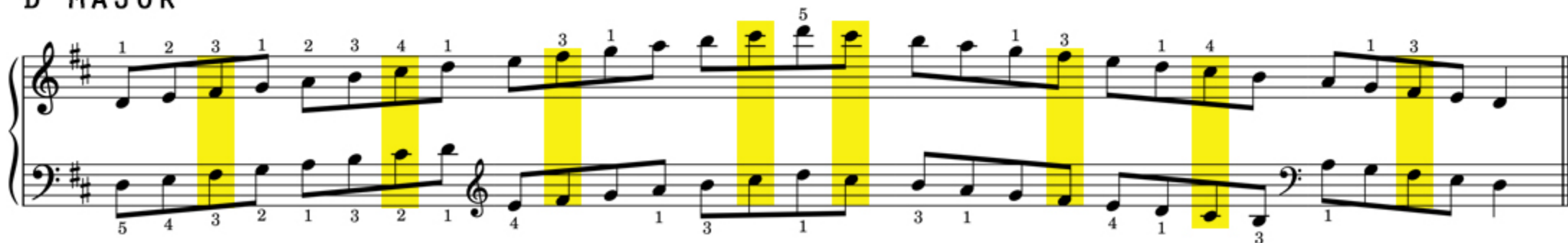
C MAJOR



G MAJOR



D MAJOR





WHITE KEY MAJOR SCALES

2 OCTAVES



C MAJOR



G MAJOR



D MAJOR



A MAJOR

Handwritten musical notation for the A Major scale (2 octaves) in treble and bass clef. The treble clef staff shows the scale ascending and descending with fingerings: 1 2 3 1 2 3 4 1 (up), 3 1 (down), 5 (up), 1 3 (down), 1 4 (up), 1 3 (down). The bass clef staff shows the scale ascending and descending with fingerings: 5 4 3 2 1 3 2 1 (up), 4 1 3 1 (down), 3 1 (up), 3 1 (down), 4 1 3 1 (up), 3 1 (down).

E MAJOR

Handwritten musical notation for the E Major scale (2 octaves) in treble and bass clef. The treble clef staff shows the scale ascending and descending with fingerings: 1 2 3 1 2 3 4 1 (up), 3 1 (down), 5 (up), 1 3 (down), 1 4 (up), 1 3 (down). The bass clef staff shows the scale ascending and descending with fingerings: 5 4 3 2 1 3 2 1 (up), 4 1 3 1 (down), 3 1 (up), 3 1 (down), 4 1 3 1 (up), 3 1 (down).

B MAJOR

Handwritten musical notation for the B Major scale (2 octaves) in treble and bass clef. The treble clef staff shows the scale ascending and descending with fingerings: 1 2 3 1 2 3 4 1 (up), 3 1 (down), 5 (up), 1 3 (down), 1 4 (up), 1 3 (down). The bass clef staff shows the scale ascending and descending with fingerings: 4 3 2 1 4 3 2 1 (up), 3 1 4 1 (down), 3 1 (up), 3 1 (down), 4 1 3 1 (up), 3 1 (down).

F MAJOR

Handwritten musical notation for the F Major scale (2 octaves) in treble and bass clef. The treble clef staff shows the scale ascending and descending with fingerings: 1 2 3 4 1 2 3 1 (up), 4 1 (down), 4 (up), 1 4 (down), 1 3 (up), 1 4 (down). The bass clef staff shows the scale ascending and descending with fingerings: 5 4 3 2 1 3 2 1 (up), 4 1 3 1 (down), 3 1 (up), 3 1 (down), 4 1 3 1 (up), 3 1 (down).