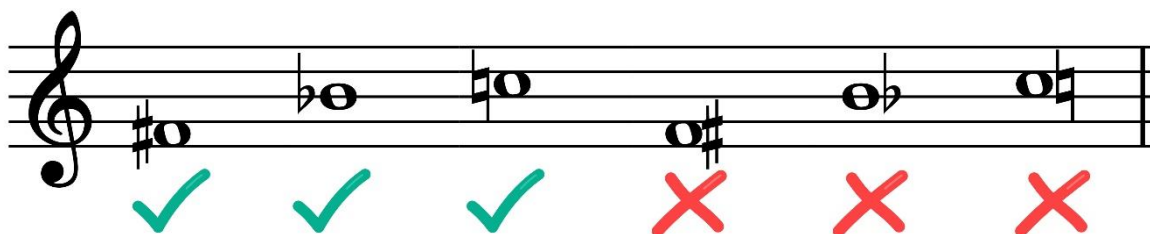


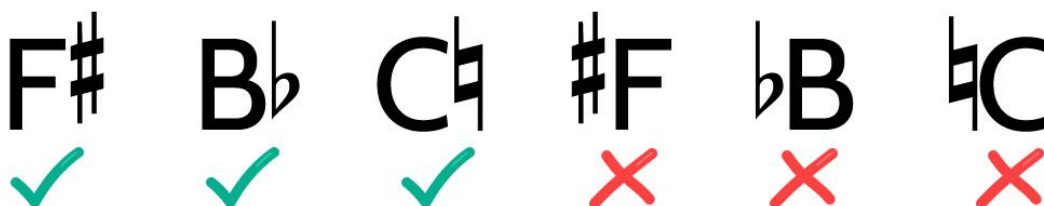
WHERE DO THE SHARP, FLAT & NATURAL SYMBOLS GO?

On the stave, the sharp, flat and natural symbols go **before** the note.



The easiest way to remember this is, you'll need to know **before** you play the note, whether it's going to be a sharp, flat or a natural.

When it's written in text, the sharp, flat or natural symbols go **after** the letter name.



The easiest way to remember this is, you **write** it the same way you **say** it. For example, "that note is a B flat" not "that note is a flat B".

When adding a sharp, flat or a natural before a note on the stave, make sure it occupies the same line or space as the note.

