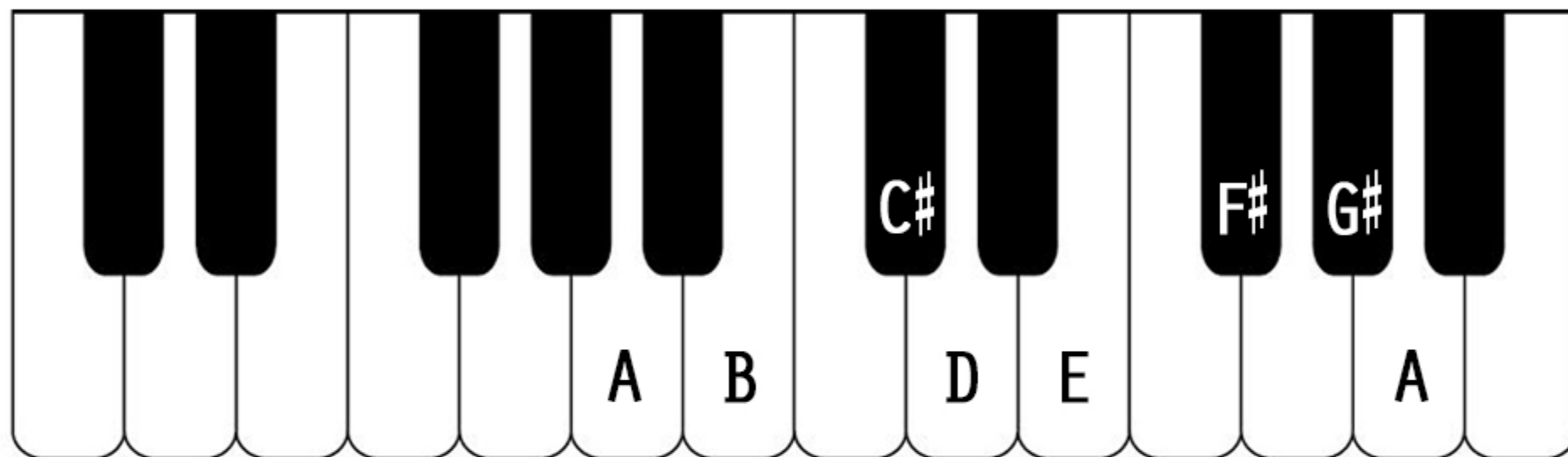


# A MAJOR SCALE



Musical notation for the A major scale, showing the treble and bass staves. The treble staff starts on A4 and the bass staff starts on A2. The scale is written in A major (two sharps: F# and C#). Fingerings are indicated by numbers 1-5 above or below the notes.

**Treble Staff (Ascending):**

- A4 (Finger 1)
- B4 (Finger 2)
- C5 (Finger 3)
- D5 (Finger 1)
- E5 (Finger 2)
- F#5 (Finger 3)
- G#5 (Finger 4)
- A5 (Finger 5)
- G#5 (Finger 4)
- F#5 (Finger 3)
- E5 (Finger 2)
- D5 (Finger 1)
- C5 (Finger 3)
- B4 (Finger 2)
- A4 (Finger 1)

**Bass Staff (Descending):**

- A4 (Finger 5)
- G#4 (Finger 4)
- F#4 (Finger 3)
- E4 (Finger 2)
- D4 (Finger 1)
- C4 (Finger 3)
- B3 (Finger 2)
- A3 (Finger 1)
- G#3 (Finger 2)
- F#3 (Finger 3)
- E3 (Finger 1)
- D3 (Finger 2)
- C3 (Finger 3)
- B2 (Finger 4)
- A2 (Finger 5)

# WHITE KEY MAJOR SCALES

2 OCTAVES - KEY SIGNATURE NOTES HIGHLIGHTED



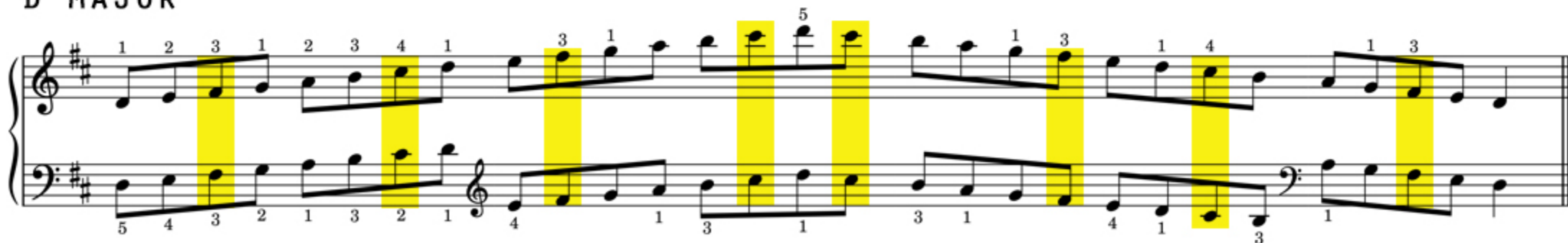
## C MAJOR



## G MAJOR



## D MAJOR





# WHITE KEY MAJOR SCALES

## 2 OCTAVES



### C MAJOR



### G MAJOR



### D MAJOR



## A MAJOR

Handwritten musical notation for the A Major scale (2 octaves) in treble and bass clef. The key signature has two sharps (F# and C#). The notation includes fingerings (1-5) and slurs for both hands. The treble clef starts on A4 and ends on A6. The bass clef starts on A2 and ends on A4.

## E MAJOR

Handwritten musical notation for the E Major scale (2 octaves) in treble and bass clef. The key signature has four sharps (F#, C#, G#, and D#). The notation includes fingerings (1-5) and slurs for both hands. The treble clef starts on E4 and ends on E6. The bass clef starts on E2 and ends on E4.

## B MAJOR

Handwritten musical notation for the B Major scale (2 octaves) in treble and bass clef. The key signature has five sharps (F#, C#, G#, D#, and A#). The notation includes fingerings (1-5) and slurs for both hands. The treble clef starts on B4 and ends on B6. The bass clef starts on B2 and ends on B4.

## F MAJOR

Handwritten musical notation for the F Major scale (2 octaves) in treble and bass clef. The key signature has one flat (Bb). The notation includes fingerings (1-5) and slurs for both hands. The treble clef starts on F4 and ends on F6. The bass clef starts on F2 and ends on F4.